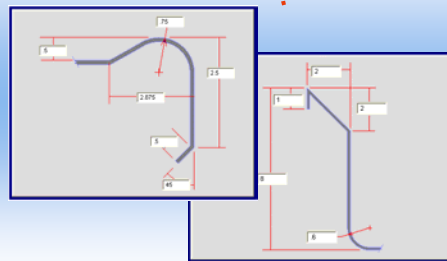
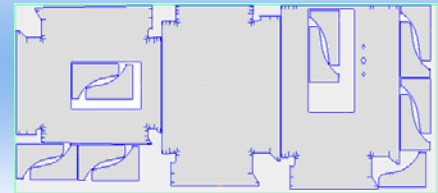
**Flat Pattern Layout****Definable Edges****Automatic Shape Nesting**

- ◆ **Automatic Pattern Layout**
- ◆ **Macro Development**
- ◆ **Advanced CAD**
- ◆ **Automatic Shape Nesting**
- ◆ **CNC Cutting**

The power you need with the features you want!

Kitchen Works streamlines pattern creation by letting you select industry standard shapes and define the required front edge and back splash. Your custom notches are stored in the system and can be easily retrieved and altered, giving you ultimate flexibility in producing custom work surfaces. Coupled with the CNC cutting process, this system dramatically increases productivity by reducing layout and cutting times!

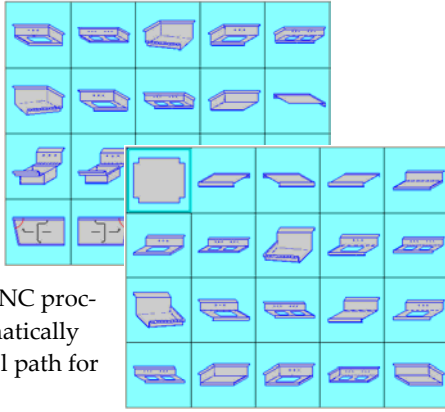
"One-window" fitting selection, workbench, and nesting

By using powerful Windows' features, Kitchen Works makes it easy to select your pattern, input the dimensions, quantity and material type, and then see the 2D flat layout of the part. One click of the auto-nest button nests the parts to optimize material usage and then you can view the nested plates as they will be cut. You can even modify the finished patterns for special applications by using Kitchen Works powerful "Workbench" drawing tool. You can place holes, chop pieces, scale or stretch them, and even merge two patterns together.



Comprehensive library provides ultimate flexibility

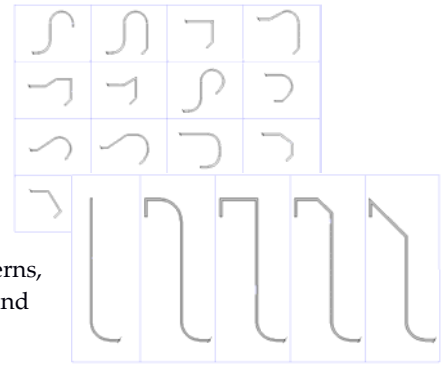
Kitchen pattern icon groups include tables, tubs, sink sections, drainboards and more. Select a pattern, select the front edge and back splash type. Change the surface width and depth and your custom shape is ready for nesting and CNC processing. The system automatically generates a completed tool path for each pattern to be cut.



Customized edge notch library

ShopData's edge library is the key to consistent metal forming. Every edge variation in Kitchen Works' vast custom library contains catch marks and tangency marks to ensure consistent forming of your stainless components.

Kitchen Works' CNC cut patterns, reduce the forming, welding and finishing times!

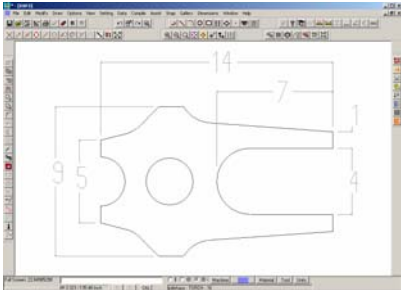


Programmable post processor

ShopData provides and supports programmable post processors for most CNC applications (coil line, water-jet, laser, punch/plasma combination, and more).

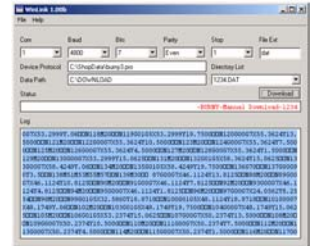
DXF import & CAD drawing

Use ShopData for Windows' visual drawing tools to design the simplest or most complex parts. DXF files can be imported individually or in batches and automatically tooled, ready to nest and cut as parts!



WinLink communication

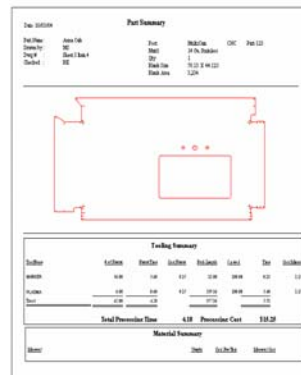
ShopData for Windows allows continuous access to your library of parts and nested sheets. Download and upload from/to your PC.



With ShopData for Windows' incredible technology you can easily drag & drop, copy, move, and rotate parts, or move lead-ins and lead-outs anywhere along the tool path or on the nested sheet. You can work with multiple drawings simultaneously and utilize dynamic zoom capability for ultimate precision in your drawings. Automatically tool parts for multiple tools using SDS' innovative "layers" technology.

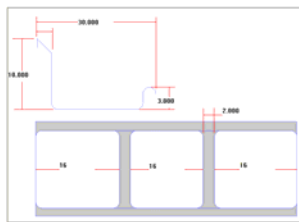
Ultimate customization for labels & reports

Through the dynamic interactive capabilities of Microsoft Windows®, you can design your own ShopData reports & labels! By interfacing Microsoft Access® and Seagate Crystal Reports™ with ShopData for Windows, you have the tools you need to extract critical data for estimating, production, shipping, inventory management, purchasing and more.



Part macro development

If you frequently cut similar parts with varying dimensions, ShopData's Macro Programming Utilities allows you to build your own dimensionable shape library! Now you don't have to redraw every variation of a given part type. This feature works great for multiple component assemblies such as drawers, doors, cabinets, even your own kitchen pattern design!

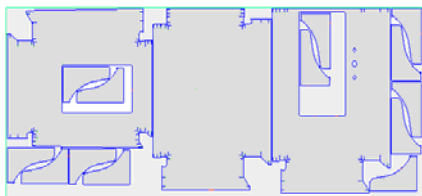


Shape library

Over 66 commonly used shapes – such as lifting lugs, belt guards, flanges, gussets – even fan housings and augers, are pre-programmed and ready for use.

Advanced Shape Nest

Kitchen Works' shape nest automatically lays parts side by side and rotates them to match interlocking angles and contours. Part "pairing" maximizes material usage through piece placement. Kitchen Works nests parts inside internal cutouts for the highest nesting precision. Other nesting features include chain cutting and move & bump manual nesting with mouse-controlled part rotation.



On-line help

There is visual on-line help for all features, plus help "movies" which actually step you through specific system functions.



Personalized training & support

ShopData backs its software with 120+ collective years of metal fabricating experience and 28+ years in business. No cutting software company has more expertise! We offer hands-on, customized training at your site or ours. Take advantage of our 24/7 phone support through the annual ShopSource Support and Upgrade program.

SHOP DATA
SYSTEMS

SDS

Shop Data Systems, Inc.
712 East Walnut Street.
Garland, Texas 75040
972-494-2719
Fax 972-272-7062
www.shopdata.com