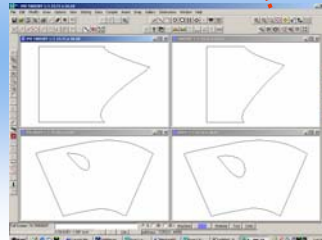
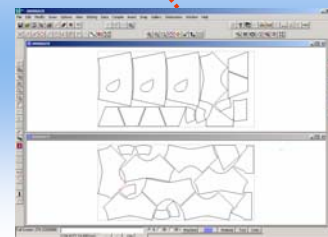
**3-D Preview****Flat Pattern Layout****Automatic Shape Nesting**

- ◆ **Automatic fitting layout**
- ◆ **Library of 70 fittings**
- ◆ **Advanced CAD**
- ◆ **Automatic shape nesting**
- ◆ **CNC Cutting**



The power you need with the features you want!

Industrial Fitting for Windows gives you over 70 round and oval fittings and 66 common 2D fabrication shapes which gives you everything you need to design, input, nest and cut your own fittings and parts jobs.

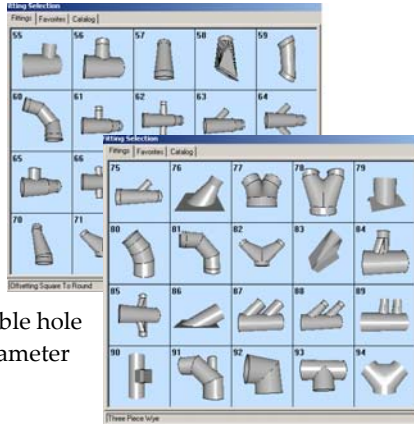
"One-window" fitting selection, workbench, and nesting

By using powerful Windows' features, Industrial Fittings makes it easy to select your parts & fittings, input the dimensions, quantity and material type, and then see an actual 3D preview of the fitting and the flat layouts of the parts. One click of the auto-
nest button nests the parts to optimize material usage and then you can view the nested plates as they will be cut.

You can even modify the finished patterns for special applications by using Industrial Fittings powerful "Workbench" drawing tool. You can place holes, chop pieces, scale or stretch them, and even merge two patterns together.

Comprehensive library provides ultimate flexibility

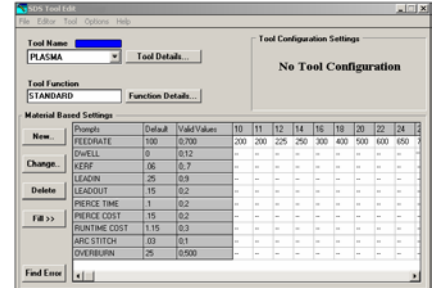
The Industrial Fittings library includes over 70 basic and complex fitting shapes including cones, offsets, elbows, wyes, branch fittings and square-to-rounds. Capabilities such as mitering, reducing, concentric/eccentric dimensioning are available as well as selectable seam placement, selectable hole sizing, and inside/outside diameter material compensation.



bump manual nesting with mouse-controlled part rotation, feature avoidance, and part tabs.

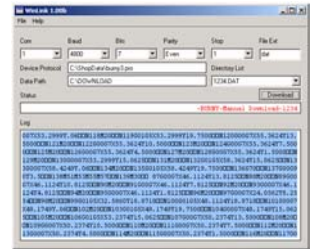
Powerful machine tool configuration

ShopData's Tool Edit module manages all of your tools and post processors. Many process parameters like kerf, lead-in/lead-out, feedrate, etc. can be controlled, automated, and integrated directly with the CNC file – while still allowing "on-the-fly" attribute changes when desired.



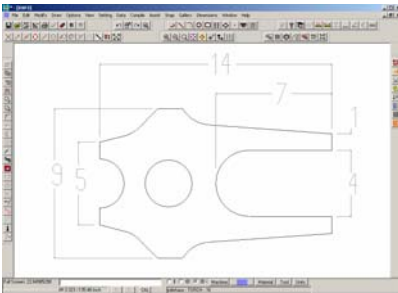
Programmable post processor

ShopData provides and supports programmable post processors for most CNC applications (punch, laser, punch/plasma combination, and more).



DXF import & CAD drawing

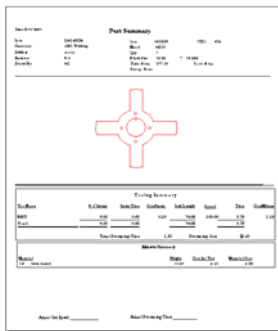
Use ShopData for Windows' visual drawing tools to design the simplest or most complex parts. DXF files can be imported individually or in batches and automatically tooled, ready to nest and cut as parts!



WinLink communication

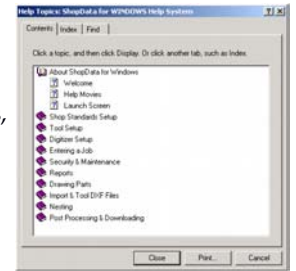
ShopData for Windows allows continuous access to your library of parts and nested sheets. Download and upload from/to your PC.

With ShopData for Windows' incredible technology you can easily drag & drop, copy, move, and rotate parts, or move lead-ins and lead-outs anywhere along the tool path or on the nested sheet. You can work with multiple drawings simultaneously and utilize dynamic zoom capability for ultimate precision in your drawings. Automatically tool parts for multiple tools using SDS' innovative "layers" technology.



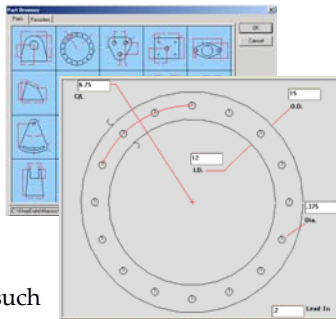
Ultimate customization for labels & reports

Through the dynamic interactive capabilities of Microsoft Windows®, you can design your own ShopData reports & labels! By interfacing Microsoft Access® and Seagate Crystal Reports™ with ShopData for Windows, you have the tools you need to extract critical data for estimating, production, shipping, inventory management, purchasing and more.



Part macro development

If you frequently cut similar parts with varying dimensions, ShopData's Macro Programming Utilities allows you to build your own dimensionable shape library! Now you don't have to redraw every variation of a given part type. This feature works great for multiple component assemblies such as containers, enclosures, even your own industrial fitting design!



Shape library

Over 66 commonly used shapes – such as lifting lugs, belt guards, flanges, gussets – even fan housings and augers, are pre-programmed and ready for use.

Advanced Shape Nest

Industrial Fittings' shape nest automatically lays parts side by side and rotates them to match interlocking angles and contours. Part "pairing" maximizes material usage through piece placement. Industrial Fittings nests parts inside internal cutouts for the highest nesting precision. Other nesting features include chain cutting, move &



On-line help

There is visual on-line help for all features, plus help "movies" which actually step you through specific system functions.

Personalized training & support

ShopData backs its software with 120+ collective years of metal fabricating experience and 25 years in business. No cutting software company has more expertise! We offer hands-on, customized training at your site or ours. Take advantage of our 24/7 phone support through the annual ShopSource Support and Upgrade program.

SHOP DATA
SYSTEMS

SDS

Shop Data Systems, Inc.
712 East Walnut Street.
Garland, Texas 75040
972-494-2719
Fax 972-272-7062
www.shopdata.com